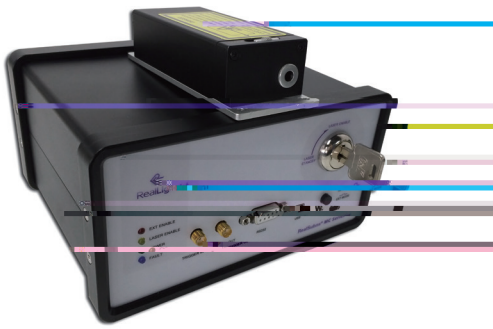


MCH



MCH RealSubns® 高重频

Q

300ps

100kHz

TEM₀₀

光学参数

(nm)	1064		532	
(kHz)	20	100	20	100
(mW)	60	100	30	50
(J)	3	1	1.5	0.5
(ps)	350	500	300	500
(8h)	±3%			

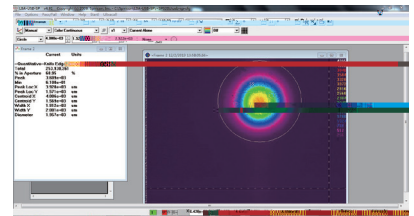
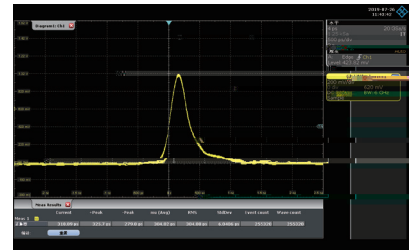
TEM

Typ.(mrad)	@1/e ²	25	30	16	25
	@1/e ²	25	30	16	25

>100:1

系统参数

	100-240 VAC, 50/60 Hz	
	RS2	2
(W)		
(W×H×L,mm)		
(W×H×L,mm)		
()		
()		

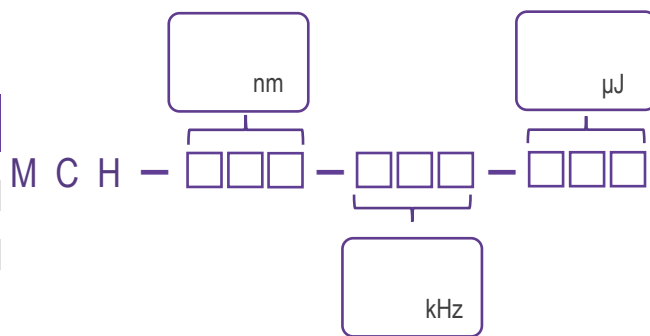


1. 355nm 266nm

2.

波长

图号



nm

